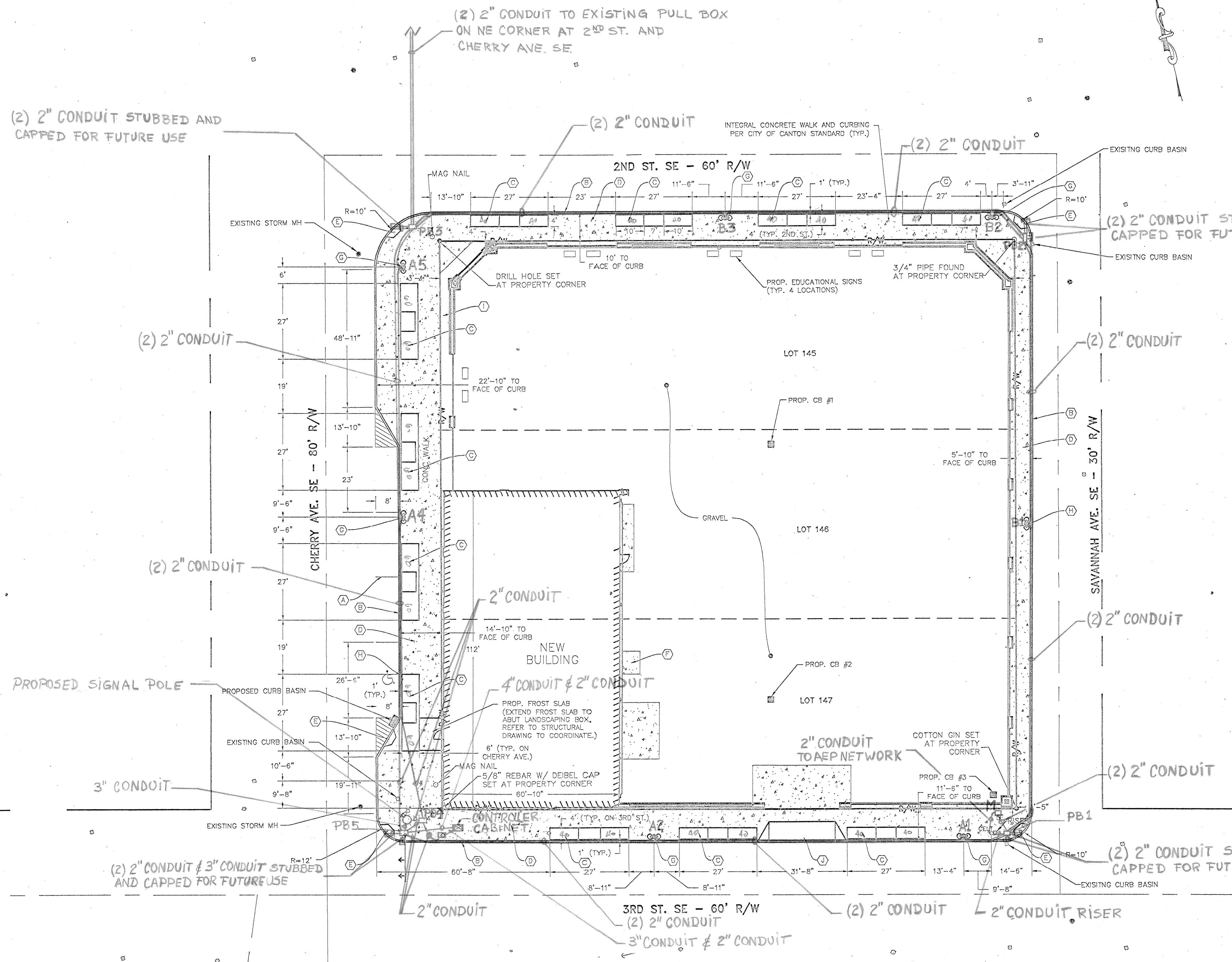


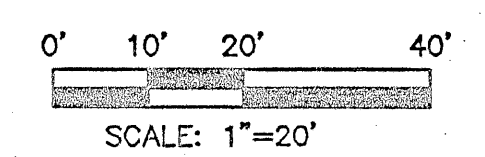
2014/07/15 10:56 AM C:\Users\jerry\OneDrive\Documents\2014-07-15 SITE.dwg



- NOTES:**
- REFER TO ARCHITECTURAL OVERALL PLAN FOR EQUIPMENT PAD LOCATIONS WITHIN THE LOT.
  - REFER CITY OF CANTON STANDARD DETAILS FROM APRIL 10, 2012 WHICH ARE INCLUDED IN THESE PLANS.
    - DRIVE APPROACH WITH SIDEWALK AGAINST CURB (DWG. 28)
    - COMBINED CURB & WALK (DWG. 29)
    - BRICK PAVEMENT REPAIR & REPLACEMENT OVER TRENCHES / ALONG CURB (DWG. 30)
    - WHEELCHAIR RAMP (DWG. 33)
    - TYPICAL STREETSCAPE CORRIDOR (DWG. 40)
    - STREETSCAPE CONCRETE WALK PAVEMENT DETAILS (DWG. 42)
    - TREE FRAME & GRATE CONSTRUCTION DETAILS (DWG. 43)
  - FACE AND / OR FOUNDATIONS OF ALL BUILDINGS AND FENCES WITHIN THE SUBJECT LOT LOCATED INSIDE THE PROPERTY LINE SHALL BE A MINIMUM OF 4" FROM THE PROPERTY LINE.
  - PROVIDE A 1 FOOT SAWCUT FROM EXISTING FACE OF CURB INTO PAVEMENT WHEN REMOVING ALL EXISTING CURB AND SIDEWALK ALONG CHERRY AVE. S.E. AND SAVANNAH AVE. S.E.
  - NO SAWCUT FOR CURB REMOVAL IS REQUIRED ALONG 2ND ST. S.E. AND 3RD ST. S.E.
  - EDGE OF SIDEWALK TO EXTEND INTO THE LOT TO INSIDE EDGE OF BRICK FENCE ON 2ND ST. S.E., 3RD ST. S.E., AND SAVANNAH AVE. S.E.
  - CONTRACTOR SHALL PROVIDE FOUR 6" PVC SLEEVES FOR PARKING METERS WHICH SHALL BE FIELD LOCATED BY THE CITY OF CANTON.
  - CONTRACTOR SHALL REMOVE ALL STREET SIGNAGE WITHIN RIGHT OF WAY STREETSCAPE UNITS AND SHALL COORDINATE PICK-UP WITH THE CITY TRAFFIC DEPARTMENT.

- KEYED NOTES:**
- (A) PAVEMENT STRIPPED BY CITY.
  - (B) REPLACE/INSTALL ASPHALT PAVEMENT AND BASE PER CITY OF CANTON STANDARD DRAWING NOS. 31 AND 40. THE CONTRACTOR SHALL BE RESPONSIBLE TO INSTALL CONCRETE BASE COURSE..
  - (C) INSTALL PAVER PANEL AND TREE GRATE PER CITY OF CANTON STANDARD DRAWING NOS. 40 AND 43.
  - (D) CONSTRUCT INTEGRAL CONCRETE WALK AND CURBING PER CITY OF CANTON STANDARD DRAWING NOS. 29, 30, 40, 41, AND 44.
  - (E) CONSTRUCT HANDICAP ACCESSIBLE RAMP TYPE A1 PER CITY OF CANTON STANDARD DRAWING NO. 33.
  - (F) CONSTRUCT YARD DUMPSTER AREA, SEE ARCHITECTURAL PLANS FOR DETAILS.
  - (G) LIGHT POLES TO BE INSTALLED BY THE ELECTRICAL CONTRACTOR, SEE ELECTRICAL SITE PLAN FOR DETAILS.
  - (H) INSTALL VAN ACCESSIBLE HANDICAP PARKING SIGNAGE, SEE DETAIL SHEET C3.2.
  - (I) LANDSCAPE AREA
  - (J) INSTALL APPROACH RAMP PER CITY OF CANTON STANDARD DRAWING NO. 27.

- LEGEND:**
- ◻ EXISTING CATCH BASIN
  - EXISTING STORM MANHOLE
  - EXISTING UTILITY MANHOLE
  - ⊕ EXISTING HYDRANT
  - ⊗ EXISTING WATER VALVE
  - EXISTING SAN. MANHOLE
  - ◇ EXISTING GAS LINE MARKER
  - EXISTING UTILITY POLE
  - EXISTING GUY WIRE
  - PROPOSED CATCH BASIN
  - PROPOSED DOWN SPOUT



**HAMMONTREE & ASSOCIATES, LTD.**  
 ENGINEERS, PLANNERS, SURVEYORS  
 CANTON-AKRON-PITTSBURGH

5233 STONEHAM ROAD NORTH CANTON, OHIO 44720  
 CANTON: (330)499-8817 AKRON:(330)633-7274  
 TOLL FREE: 1-800-394-8817 FAX: (330)499-0149  
 www.hammontree-engineers.com

**SOL**  
HARRIS/DAY

6877 Frank Ave NW  
Canton, OH 44703 3225  
PH: 800-458-5777  
www.soharrisday.com

Renovations for: Stark State College

# DOWNTOWN BUILDING No.1

234 CHERRY AVE SE  
CANTON, OHIO 44702

MARK	DATE	DESCRIPTION

PROJECT NO: h day - Stark State cherry  
DATE: 2014.01.14

## STREETSCAPE SITE DIMENSION PLAN

# C2.2